

Digital Artwork Guidelines

Software Supported

Please supply layouts in Adobe Illustrator CS5.1, InDesign CS5.5
We prefer to work from original artwork. InDesign templates are available to download from our website.

Artwork Size

Supply artwork for each panel to scale, at 25% of the final output size.
Please refer to the following pages for specific dimensions on each display.

Bleed

Add 10mm bleed to all layouts.

Scans

Any scans should be supplied 100% in the picture box specified within Quark/
InDesign. All scans to be minimum of 240dpi, we prefer 300dpi resolution, 8-bit
CMYK colourspace, saved as either .PSD .JPG .TIF .EPS files.

Fonts

Please supply all fonts used in the artwork. Use only Type 1 Postscript fonts.
Include any embedded fonts within imported Illustrator files. Where possible save
fonts as outlines.

DO NOT use font embellishment (artificially boldening, italicising, outlining etc.)
in InDesign or Illustrator.

Solid Colours

Please specify all solid colours as Pantone references.

Matching Pantone Colours / Supply Proofs

Because the graphics are printed CMYK we cannot match Pantone colours exactly,
however in practice we can get very close to the majority of Pantone colours.
In critical situations *i.e.* matching a corporate colour, we prefer to supply colour
proofs for approval. Please allow an extra 1–2 days to process and deliver.

How to get artwork to us

Small files under 15mb can be mailed to artwork@dimensions-displays.com

Send it to us via MailBigFile / YouSendIt or similar file transfer service providers.

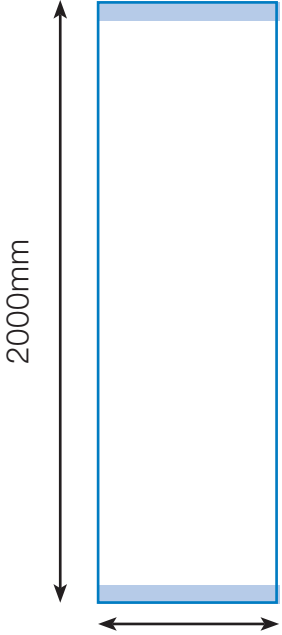
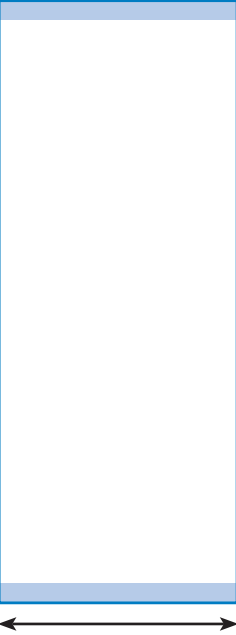

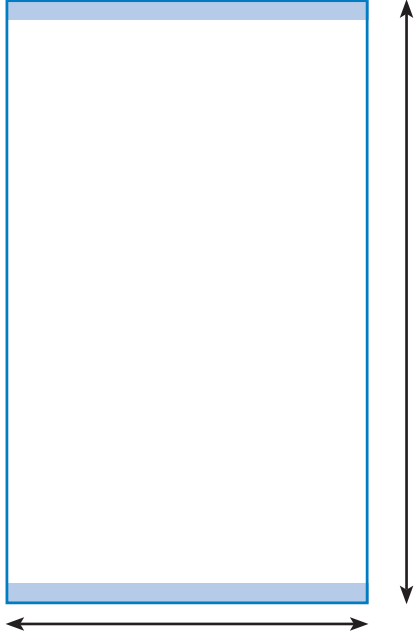
If the artwork files are very large you can send artwork on disk by mail or courier.
DO NOT post artwork to us using the normal Royal Mail services if the job is
urgent.

Please supply either a low res PDF proof or colour run out with your artwork.

Digital Artwork Guidelines – Banner / Artwork sizes for Standard, Wide, Curved Displays

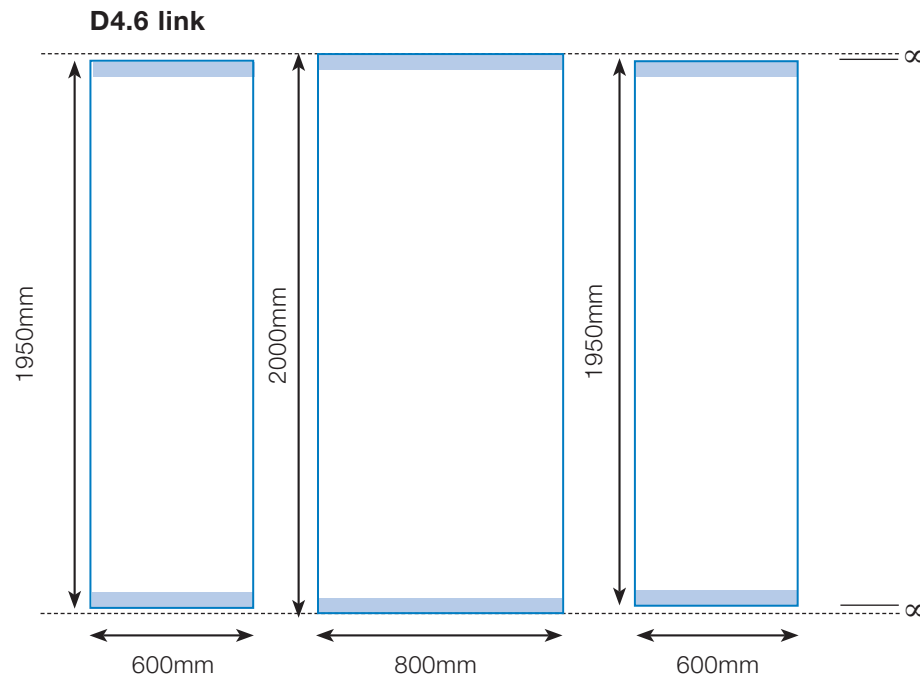
All artwork files for each panel should be supplied at 25% of the finished dimensions described below.

Non-safe type areas: where the pocket is formed. Located 60mm in from top and bottom edges.

Display model	D4.6 Standard	D4.6 - 80 Wide D4.8 Standard	D4.6 - 100 Wide D4.6 - 100 Curve	D4.8 - 120 Wide D4.8 - 120 Curve
Finished banner visual area				
Artwork size	150mm x 500mm	200mm x 500mm	250mm x 500mm	300mm x 500mm

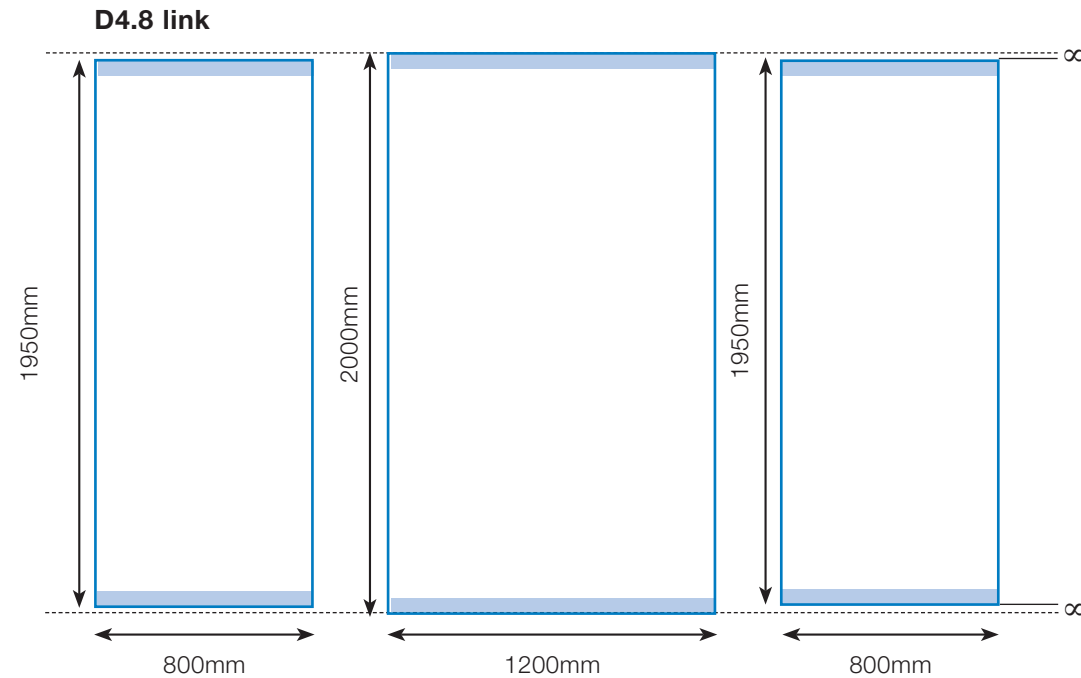
Digital Artwork Guidelines – D4 Linked Banner Specifications

All artwork files for each panel should be supplied at 25% of the finished dimensions described below.



Artwork sizes

150mm x 487.5mm 200mm x 500mm 150mm x 487.5mm



Artwork sizes

200mm x 487.5mm 300mm x 500mm 200mm x 487.5mm

NB: When aligning graphics across all three panels, the centre panel starts 25mm higher than the two external panels.

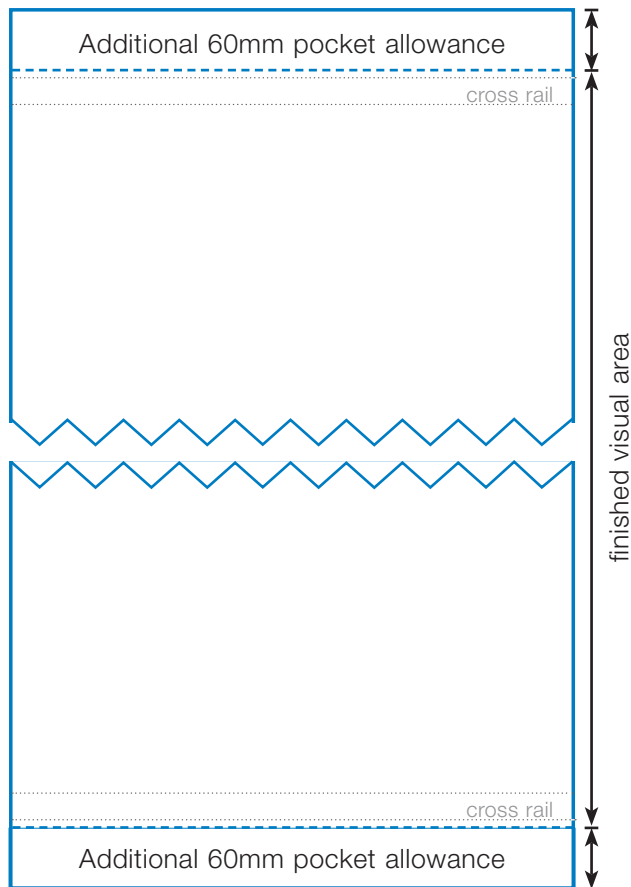
Key: ∞ = 25mm

Digital Artwork Guidelines – Finishing Instructions for Standard and Linked Displays

When outputting artwork add an extra 60mm on either end to create pockets for the battens.

Step 1:

Trim out banner leaving an extra 60mm on either end to create pockets for cross rails.



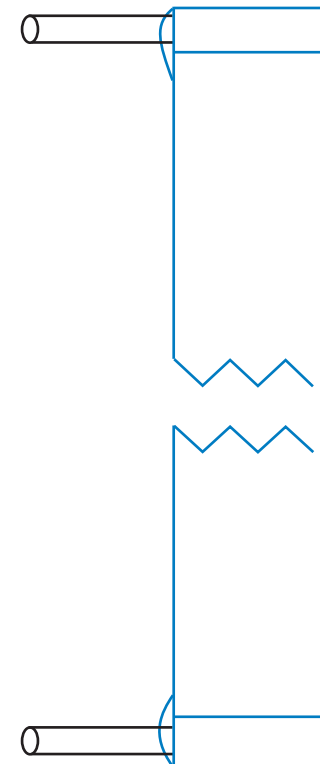
Step 2:

Apply double sided tape and fold over excess to create pocket



Step 3:

Insert cross rails

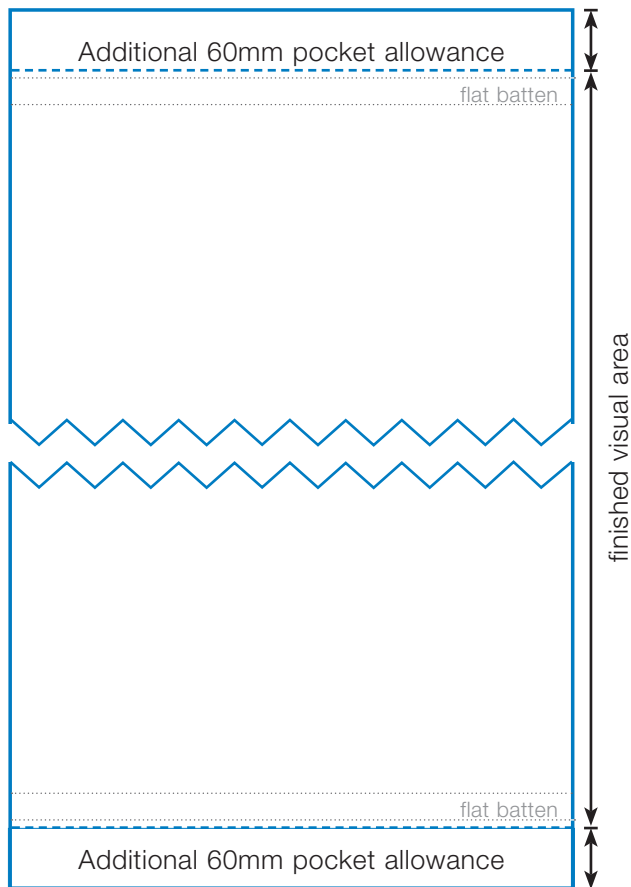


Digital Artwork Guidelines – Finishing Instructions for D4 Wide, D4 Curve

When outputting artwork add an extra 60mm on either end to create pockets for the battens. Always use the correct cutting template (please call us for one).

Step 1:

Trim out banner leaving an extra 60mm on either end to create pockets for cross rails



Step 2:

Apply double sided tape and fold over excess to create pocket



Step 3:

Use the D4 Cutting template to mark the hole positions correctly.

Punch holes in pockets

Insert flat or curved batten to check holes line up

